

49TH ANNUAL



Saturday, July 26 8:00 AM



Elysian Park

5K RUN/WALK

www.AztlanXCClassic.com



THANK YOU!

Thank you for joining us at the Aztlan XC Classic! Since 1976, this event has served as more than a race — it's been a celebration of culture, resilience, and community. Designed as a cross country challenge, the course welcomes runners of all backgrounds and experience levels. The Aztlan XC Classic proudly highlights the talent and strength within our community, featuring elite athletes who inspire the next generation. With a strong focus on youth, the event creates a space where young runners see themselves reflected in the sport.

Proceeds support the Los Angeles Parks Foundation and the Aztlan Athletics Foundation, both committed to uplifting underserved communities through access, equity, and movement.

CONTENTS

REGISTRATION INFORMATION

CANCELLATION POLICY

EVENT TIMELINE

EVENT PARKING

BIB & T-SHIRT PICK - UP DETAILS

COURSE INFORMATION

VALUED SPONSORS

EVENT DETAILS & LOGISTICS

REGISTRATION

Registration Fees

- 5k Run/Walk: \$55
- 5k w/out Shirt: \$45
- 17 and younger: \$25
 - T-shirt is guaranteed for pre-registration
 - Same-day registrants will be issued their event shirt after the start of the race

NOTE: Based on this year's registrations, there will be plenty of t-shirts for all registered participants. However, late registration t-shirts will be provided after the start of the run.

HOW TO REGISTER

- ONLINE REGISTRATION AVAILABLE THRU **FRIDAY JULY 25TH AT 11:59 P.M.**
- IN-PERSON LATE REGISTRATION IS AVAILABLE THE MORNING OF THE EVENT
 - SATURDAY JULY 26TH 6:30 AM - 7:45 AM

REMEMBER TO MAKE SURE YOU ARE ENTERING YOUR CORRECT DATE OF BIRTH INFORMATION WHEN YOU REGISTER. THERE WILL BE DIVISION AWARDS PROVIDED TO BOTH MALES AND FEMALES IN EACH AGE CATEGORY.

CANCELLATION POLICY

Sale and/or transfer of race entry/ bib is prohibited. All registration fees and ancillary purchases are non-refundable. Participants may be required to show a photo ID.

You are encouraged to purchase registration insurance in the event you are unable to make the race. Although rare, there may be postponements due to situations beyond the control of the event organizer and operating partner Aztlan Athletics, LLC.

EVENT TIMELINE

SATURDAY
JULY 26

6:30 AM

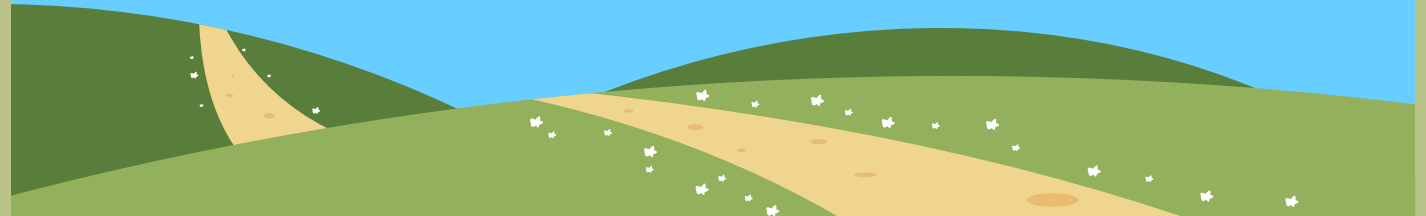
BIB PICK-UP OPENS

7:45 AM

BIB PICK-UP CLOSES

8:00 AM

5K RACE START



EVENT LOCATION

Elysian Park: 1025 Elysian Park Drive

In-person, late registration available at this location

EVENT PARKING

Arrive early and factor in traffic to ensure you make it to the start line on time.

There is plenty of parking in the Grace Simmons Lodge area as well as along Stadium Way.

BIB & SHIRT PICK UP

Bib pick-up is only available on race day. We strongly encourage participants to collect their race shirt and bib early to allow ample time for parking and timely arrival at the start line. Please take note of the following:

- Participant bibs will be assigned at packet pick-up using dynamic bib assignment
- You are responsible for making sure the bib is assigned to you
- T-Shirts Guaranteed to Pre-Registered Participants
- Late registrants will be able to pick up their shirt after the start of the race
- If you do not wear the bib assigned to you, your time may not be accurate when checking your results

EVENT PACKET



*shirt design subject to change



COURSE INFORMATION

STARTING LINE

Runners are encouraged to begin lining up no later than 15 minutes prior to the start of the race.

To ensure a safe start, please line up according to your expected race pace. Faster runners should be positioned at the front of the start chute, while slower runners/walkers/strollers start in the back. Remember you are being chip timed so your race time will not begin until you cross the start line.

SAFETY

Water & electrolytes will be available at the halfway mark on the 5K route and at the finish line.

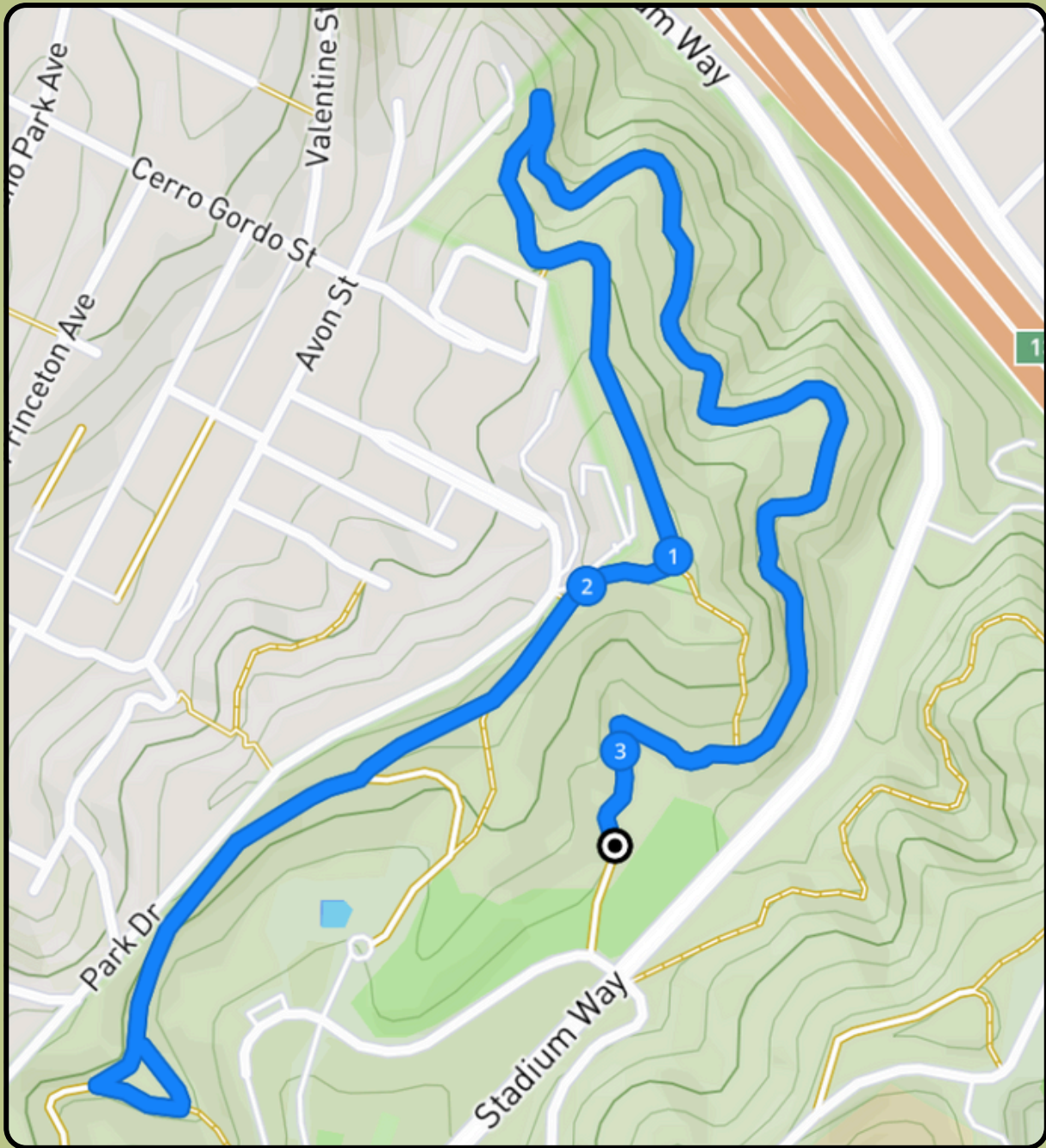
There will be a first aid team available to respond on the course of the 5K. A first aid station also available in the main expo area.

FINISH LINE

Featuring sampling, exhibitor booths, and music entertainment. Awards ceremony will take place in the registration expo area.



COURSE MAP



The course will be clearly marked. Keep an eye out for directional markers.



Keep an eye out for our photographer at the finish line!





VALUED SPONSORS



Aztlan Athletics has been developing community-based, mission-driven, sustainable properties in Southern California since 1976. All of the staff and service contractors reside in the region. We are honored to bring positive impact to the diverse communities of Los Angeles. Aztlan currently contracts with over 20 recognized non-profit organizations in the region. For more information visit AztlanAthletics.org





IN MEMORY OF

Andre Patzkowski

Daniel Emilio de la Torre

Dr. Frank Meza

TAG US IN YOUR POSTS!

@AztlanAthletics